



A Polyhydon Group Company

**PILOT OPERATED
PRESSURE REDUCING VALVE.
MODULAR CONSTRUCTION
Model : MPPM*06**

ENGINEERING

1 of 2

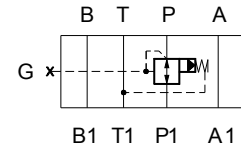
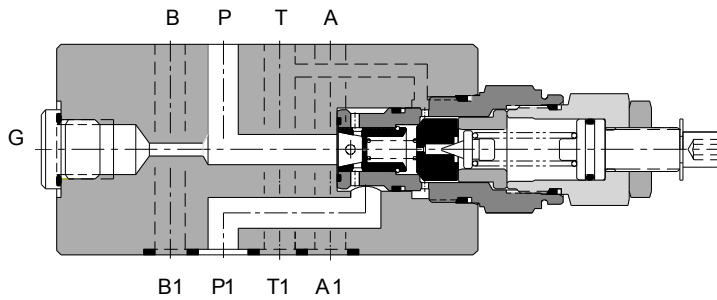
Ref. No. D09247
Release 07/2013

Description

Valve model MPPM*06 are Pilot operated pressure reducing valves, offering reduced pressure at it's out let port. The pressure adjustment can be made by loosening the lock nut and turning the setting screw in clock wise direction to increase the pressure.
The interface conforms to ISO 4401, Size 06.



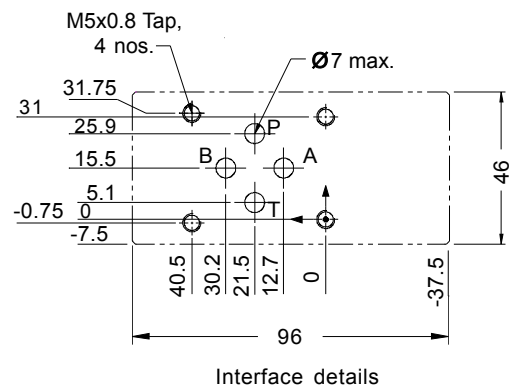
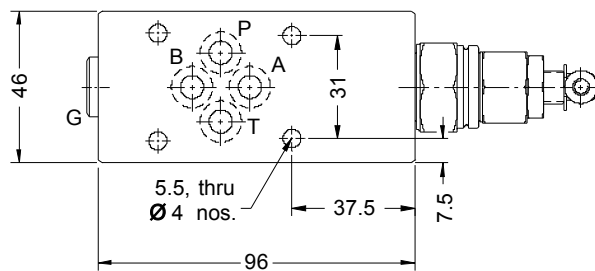
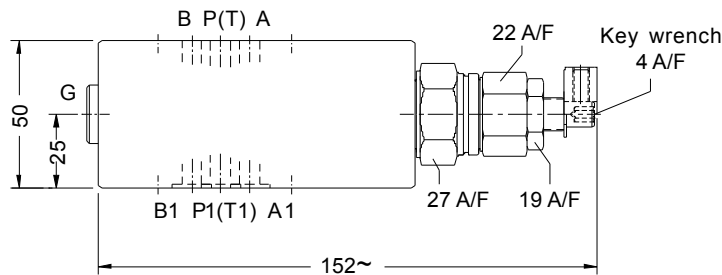
Section



Hydraulic symbol

Unit Dimensions

Dimensions in mm.



Interface details

Note :
Surface roughness : Ra value is equal to or better than 0.8 µm
Surface flatness : 0.01 - 100 mm.

Polyhydon Pvt. Ltd.
78-80, Machhe Industrial Estate,
Machhe, Belgaum - 590 014. INDIA.

Phone : +91-(0)831-411001
Fax : +91-(0)831-411002
E-mail : polyhydon@gmail.com
Website : www.polyhydon.com



A Polyhydron Group Company

PILOT OPERATED
PRESSURE REDUCING VALVE.
MODULAR CONSTRUCTION
Model : **MPPM*06**

ENGINEERING

2 of 2

Ref. No. D09247

Technical specifications

Construction	Pilot operated, Modular (Stakable)
Mounting style	Conforming to ISO 4401 - AB - 03 - 4 - A
Mounting position	Optional.
Direction of flow	As indicated by the hydraulic symbol.
Operating pressure	315 bar for all ports.
Viscosity range	10 cSt to 380 cSt.
Fluid temperature range	-10 degree C to +80 degree C.
Maximum operating pressure	Refer Table no.1.
Nominal flow handling capacity	30 lpm.
Nominal leakage flow at ' T ' port	~ 0.4 l/min. while in operation.
Mass	1.5 Kg. ~
Reverse flow	Possible, if pressure does not exceed 90% of set pressure on the valve.

Ordering code

MPPM S 06 P 100 - 01

Modular construction,
Pilot operated,
Pressure reducing valve.

Design code subject to change.
Installation dimensions remain same
for design code thru 01 thru 09.

Pressure adjustment with Setscrew S

Pressure adjustment with Handknob H

Pressure Rating (bar)
50,100,200 & 315

Size 06

P Reduced pressure at Port P
* Other models on specific request